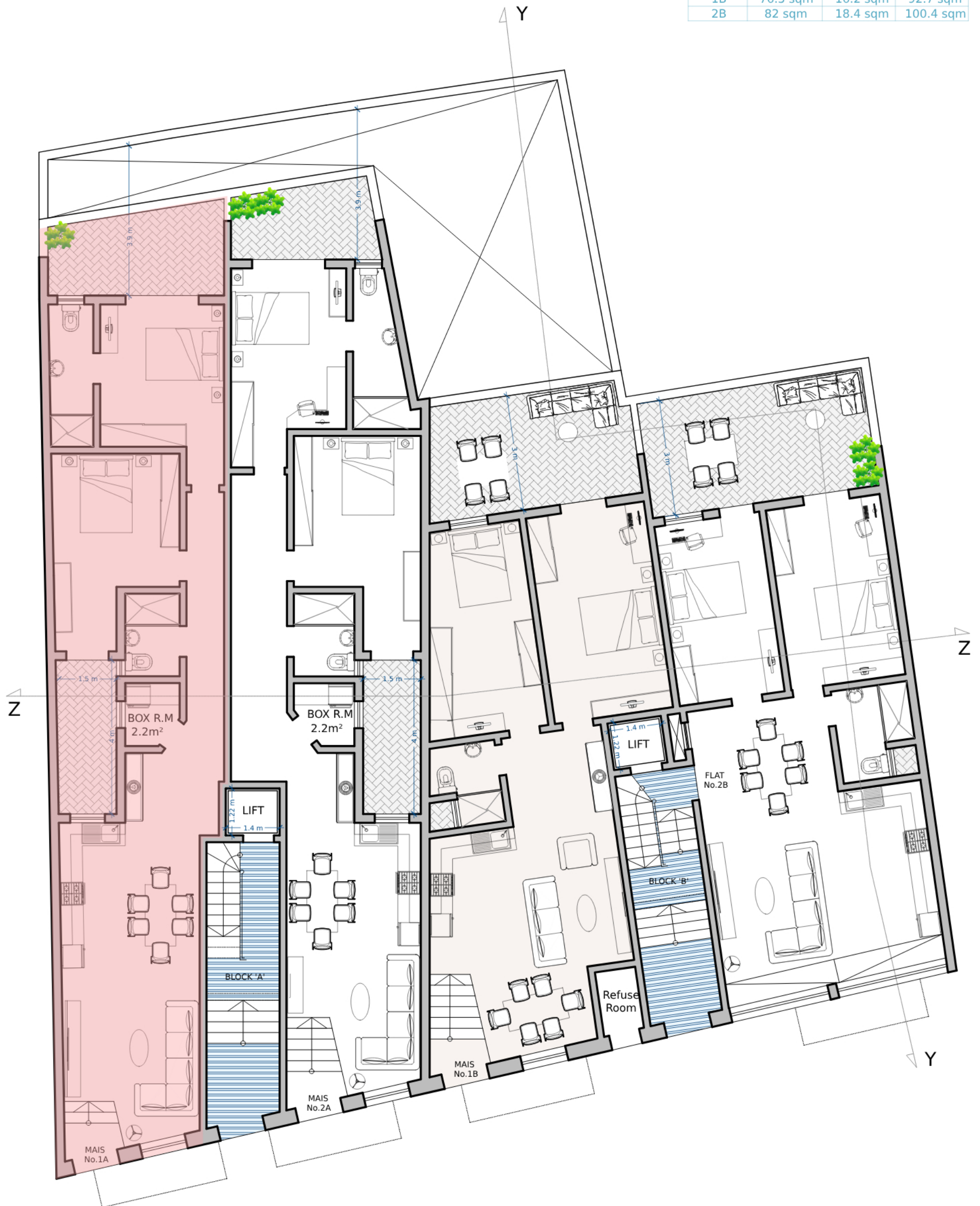


| UNIT | INTERNAL | EXTERNAL | TOTAL |
|------|----------|----------|-----------|
| 1A | 93.6 sqm | 10.1 sqm | 103.7 sqm |
| 2A | 90.9 sqm | 8.4 sqm | 99.3 sqm |
| 1B | 76.5 sqm | 16.2 sqm | 92.7 sqm |
| 2B | 82 sqm | 18.4 sqm | 100.4 sqm |



GROUND FLOOR
 PROPOSED
 Scale 1:100