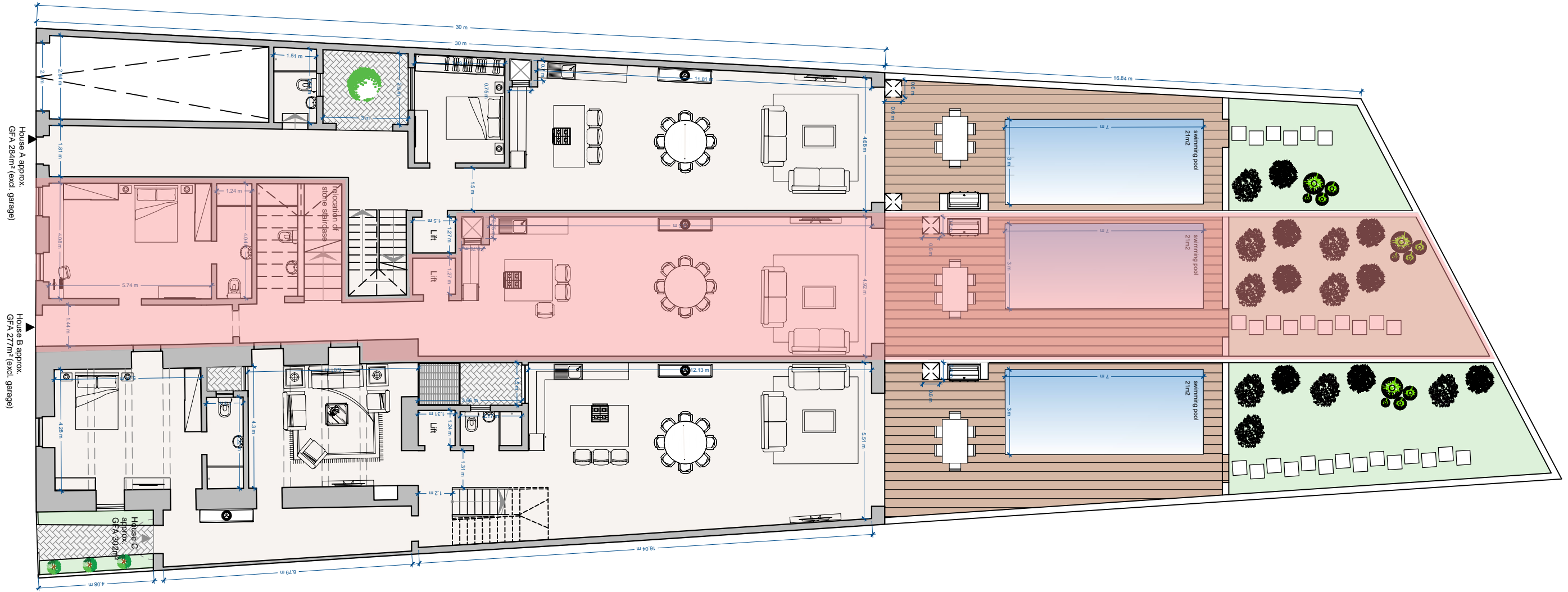


**GROUND FLOOR**  
**PROPOSED**

SCALE 1:150



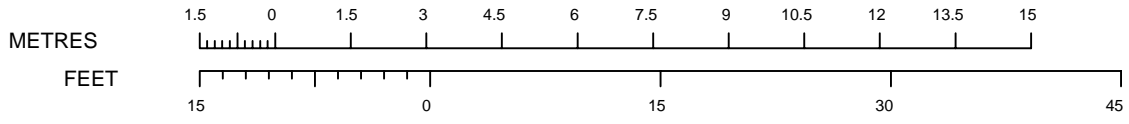
House A approx.  
GFA 284m<sup>2</sup> (excl. garage)

House B approx.  
GFA 277m<sup>2</sup> (excl. garage)

House C approx.  
GFA 302m<sup>2</sup>

Relocation of  
stairs/spiral stairs

UNIT	INTERNAL	EXTERNAL	TOTAL
HOUSE A	131.8 sqm	85.6 sqm	217.4 sqm
HOUSE B	151.7 sqm	103.9 sqm	255.6 sqm
HOUSE C	189.9 sqm	126.8 sqm	316.7 sqm



SCALE 1:150