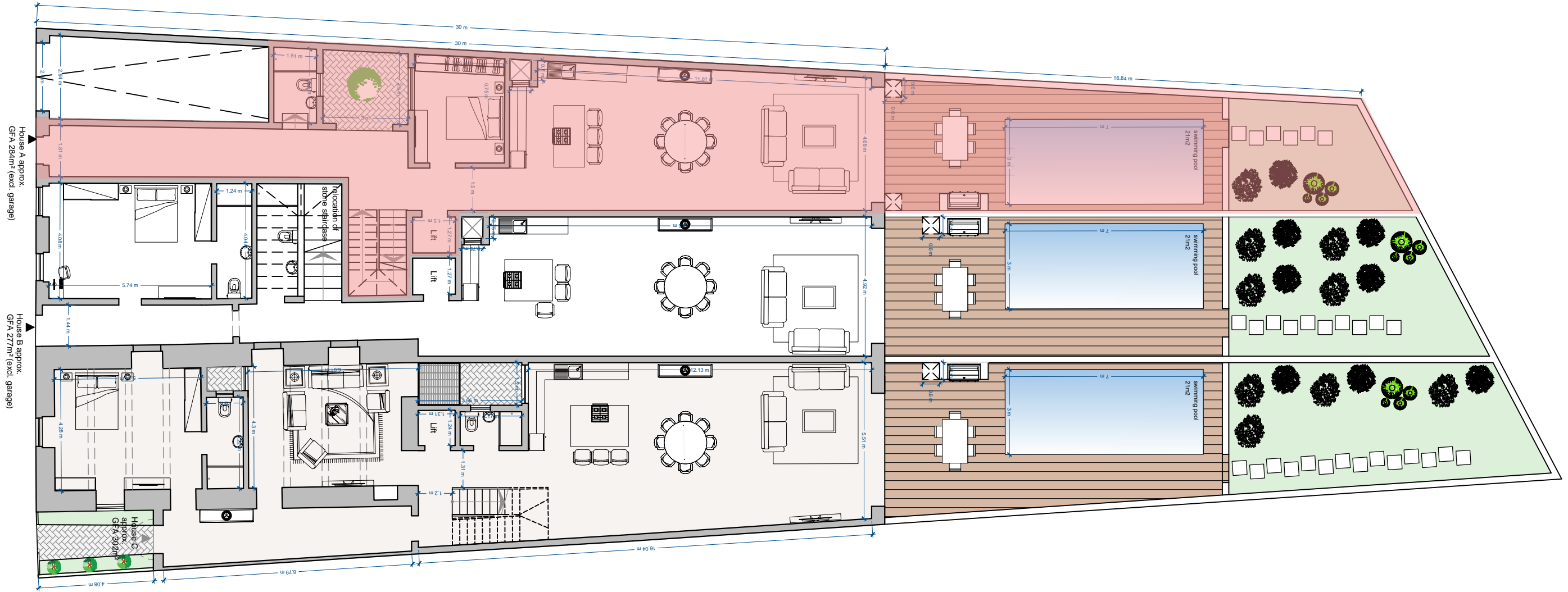


GROUND FLOOR
PROPOSED

SCALE 1:150

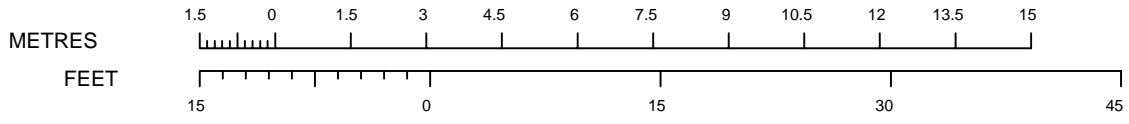


House A approx.
GFA 284m² (excl. garage)

House B approx.
GFA 277m² (excl. garage)

House C approx.
GFA 302m²

Relocation of
stair spindles



SCALE 1:150

UNIT	INTERNAL	EXTERNAL	TOTAL
HOUSE A	131.8 sqm	85.6 sqm	217.4 sqm
HOUSE B	151.7 sqm	103.9 sqm	255.6 sqm
HOUSE C	189.9 sqm	126.8 sqm	316.7 sqm